



Lean Spraying Achieves Outstanding Intelligent Manufacturing



2025 PRODUCT MANUAL

Guangdong Haztek Coating Technology Co., Ltd.
Block 17, Shenke Chuangzhi Park, No.6 Xingye East Road, Shishan Town, Nanhai District, Foshan City
Website: www.haztek.cn Email: HHL@Haztek.cn
Contact: +86 0757-81081785 / 86651558

Official WeChat Account

Scan to Access Official Website

WeChat Video Channel

WeChat After-Sales Service Account



ISO9001 Enterprise Certification

European Union CE Marking Products

EU International Explosion Protection Safety Certification

Multiple Inventions Patents

National High-Tech Enterprise

Sasme Provincial Honor Qualification

Digitalization of Aluminum Processing Practice Innovation Enterprise



Guangdong Haztek Coating Technology Co., Ltd, established in 2012, is a national high-tech enterprise focusing on the research and development, production and system solutions of electrostatic powder coating equipment. The company is committed to providing intelligent, high-efficiency, environmentally friendly spraying equipment for the coating industry, and its main products cover automatic electrostatic powder spray gun, digital control system, and integrated solutions for the whole line.

As a technical pioneer in the field of domestic coating equipment, Haztek owns an independent research and development technology platform, an advanced experimental testing center and a perfect after-sales service system. The company's products are widely used in aluminum profiles, home appliances, hardware, auto parts and other industries, serving customers including Midea, Haier, Oppl Lighting, Wuyi Heavy Industry and other well-known enterprises, products are exported to Southeast Asia and the Middle East. Haztek always adheres to the core competitiveness of "high standard, high service, high supporting", follows the development trend of the industry, promotes the powder coating equipment to digitalization, intelligence, environmental protection, and helps the global coating manufacturing enterprises to realize the double upgrade of efficiency and quality.

- National High-Tech Enterprise
- Aluminum Processing Equipment Digital Fusion Manufacturing Innovation Practice Enterprise
- Guangdong Province Contract-Abiding and Creditable Enterprise
- Innovative Small and Medium-sized Enterprise
- Provincial Specialized, Special, and New Enterprise



Guangdong Haztek Coating Technology Co., Ltd

Some clients that cooperate with HAZTEK

Collaborative Brands | Join Hands
Adhere to customized projects for spray system and comprehensive after-sales service for global customers

Brand expansion across multiple countries worldwide



Why Choose HAZTEK

A brand with the mission of "continuously creating value for customers."

Haztek, as a leading paint coating equipment brand in China, has always upheld the mission of "continuously creating value for customers." With 20 years of experience in the industry, Haztek has continuously innovated in equipment development, keeping pace with the times and customer needs. In terms of service support, not only does Haztek help customers solve various paint coating challenges, but it also provides multidimensional training to share professional knowledge and production experience with enterprises, thereby assisting them in achieving continuous value creation in production management and paint coating quality.

International Standard Certification for Equipment Quality / User Reputation, Consistent Market Recognition

"No high-standard equipment can withstand the test of the market." - The product philosophy of Haztek is to create Chinese spray guns that exceed European and American standards. We adhere to international certification standards, and CE/ATEX certification is a necessary standard for Haztek products. The stability of the equipment originates from international brand components, such as NXP Semiconductors, TI Instruments, ST Microelectronics, and Japanese Suntan capacitors, etc. It is precisely such benchmarking standards that have earned Haztek products both user reputation and market recognition.

International Standard Certification for Equipment Quality / User Reputation, Consistent Market Recognition

As a national high-tech enterprise, it has a strong engineering technology center and researchers, and has been in long-term cooperation with many top global technology companies, integrating high-quality R&D resources from around the world. To date, it has more than 40 patents, solving many difficult problems in the coating industry through technology implementation. Intelligent control systems: Coatpilot spray management system, PCT proportional valve technology, dense phase pump digital valve and other technologies greatly enhance the convenience of operation and production efficiency.

Customized Service / Customized according to the personalized needs of users

Our customized services cover the entire process from requirement analysis, customized solutions to equipment maintenance. According to the characteristics and needs of different industries (such as home appliances, building materials, aluminum industry, national defense heavy industry, construction machinery, MDF furniture, new energy vehicles, etc.), we tailor complete, lean and intelligent coating production line systems for customers, realizing a one-stop turnkey project.

Brand service guarantee and after-sales support services: full-cycle closed-loop

Pre-sales: Deeply understand customer needs, provide professional consulting and planning suggestions, arrange on-site inspections and project analysis;
During sales: Confirm the implementation plan for the coating scheme, ensure timely delivery and installation of equipment, and have professional engineers follow up on the order progress throughout;
After-sales: Establish a customer service team with 24-hour online response, handle equipment failures, repairs, and maintenance needs in the first time, ensure customer production continuity, and solve customer problems at any time.
Systematic management: Professional after-sales service personnel follow up and remind of key points for equipment maintenance. Timely supply of powder spray guns and various related spare parts, covering consumables and wear parts of coating equipment such as coating production lines, so that these accessories are high-quality original parts from HanZhe. Relying on an efficient logistics distribution service system, ensure that the required accessories are delivered quickly and on time, maintain stable operation of the equipment, and extend the service life of the equipment.

SURPASS Series

Intelligent and efficient electrostatic powder coating system



ISO9001
Enterprise
Certification

European
Union CE
Marking
Products

EU International
Explosion
Protection
Safety Certification



Smarter and more efficient product experience,
higher safety and environmental standards and outstanding coating quality.

SURPASS Series

Automatic electrostatic powder spray gun

Products	Description
	Master Control Unit - GC20 Digital current control ensures stable flow and precise powder output. Supports 20 programmable modes, one-click cleaning, and self-diagnosis. Built-in CANopen communication for smart integration and remote monitoring.
	GC20NA Controller High-reliability controller for automated spraying. Offers strong safety, multi-program support, and seamless integration for industrial production lines.
	Coatpilot Controller Open and intelligent system supporting ERP/MES integration. Enables fast parameter switching, full automation, and stable, repeatable coating quality.
	AG20 Automatic spray gun 100kV high-voltage with self-cleaning electrode for strong static charge and high powder efficiency. Covers complex surfaces with minimal waste and excellent atomization.
	DP01 High-density pump Dense-phase powder transfer for high-volume, low-wear conveying. Ideal for long runs and reduced maintenance with wide speed adjustment range. Max output: 650g/min.
	PPH40 Powder pump Plug-and-play design for fast color change and cleaning. Non-stick Venturi tube and quick connectors ensure reliable powder delivery. Max output: 520g/min.

GC20NA-C

Automatic Powder Coating Equipment: Master Controller+ Automatic Spray Gun

- Master Control Unit - GC20NA;
- Automatic Spray Gun - AG20;
- Powder Pump - PPH40;
- Powder Hose: 16 Meters
- Hose Connection Accessories + Consumable parts kit.



CoatPilot – Smart & Efficient

Simplifies complex processes with ease

80% Powder Transfer Efficiency

Excellent atomization and more uniform powder charging for finer coating

Highly scalable

Compatible with ERP, MES, and other third-party systems via API integration

Strong yet Gentle Atomization

Smoother, more even coating finish with improved leveling

Reliable and durable performance

Wear parts have a longer service life (measured in months), with lower maintenance frequency

Triple Air Injection Technology

Continuously cleans the electrode needle to prevent powder buildup

GC20A

Automatic Powder Coating Equipment: Master Controller+ Automatic Spray Gun

- Automatic Spray Gun - AG20;
- Master Control Unit - GC20;
- Powder Pump - PPH40;
- Powder Hose: 16 Meters
- Hose Connection Accessories + Consumable parts kit.



520g/min

Maximum Powder Output

80% Powder Transfer Efficiency

Excellent atomization and more uniform powder charging for finer coating

100kV High-Performance Cascade

Stable and continuous electrostatic discharge

Strong yet Gentle Atomization

Smoother, more even coating finish with improved leveling

Reliable & Durable

Longer service life of wear parts (measured in months), lower maintenance frequency

Triple Air Injection Technology

Continuously cleans the electrode needle to prevent powder buildup

SURPASS Series
Manual electrostatic powder spray gun



Manual Spray Gun - MG20

Meets the "plug and play" function, suitable for quick color changes and cleaning. Quick plug design for powder hoses to facilitate separation and connection for cleaning. The Venturi tube is made of high-quality non-stick material and comes with a quick connection for compressed air. The maximum powder output is 520g/min.

Products	Description
	<p>GC20-F Manual Powder Coating Equipment</p> <p>Master Control Unit - GC20; Manual Spray Gun - MG20; Mobile Trolley; Stainless Steel Powder Hopper: 50L; Powder Pump - PPH40 Powder Hose: 12*18mm, 6 Meters; Regulator and Air Distribution Unit Standard Hose Connection Accessories + Consumable parts kit.</p>
	<p>GC20-FZ Manual Powder Coating Equipment With Vibration table</p> <p>Master Control Unit - GC20; Manual Spray Gun - MG20; Mobile Trolley; Powder Pump - PPH40 Powder Hose: 12*18mm, 6 Meters; Regulator and Air Distribution Unit Standard Hose Connection Accessories + Consumable parts kit.</p>

Products	Description
	<p>GC20-SE Wall-Mounted Manual Powder Coating Equipment</p> <p>Master Controller Unit - GC20; Manual Spray Gun - MG20; Powder Pump; Hose & Cable: 6 Meters; Wall-mounted bracket; Standard Hose Connection Accessories + Consumable parts kit.</p>
	<p>GC20-T Desktop Type Lab Powder Coating Equipment</p> <p>Master Controller Unit - GC20 Manual Spray Gun - MG20 Powder Pump - PPH40 Powder Hopper: 1.34L Desktop Mounting Kit Air Hose & Cable: 5 Meters Hose Connection Accessories Consumable parts kit.</p>
	<p>GC20-TU Desktop Type Lab Powder Coating Equipment</p> <p>Master Controller Unit - GC20; Manual Spray Gun - MG20; Powder Pump; Small Powder Cup: 0.3L Hose & Cable: 6 Meters; Wall-mounted bracket; Standard Hose Connection Accessories + Consumable parts kit.</p>
	<p>GC20-TD Desktop Type Lab Powder Coating Equipment</p> <p>Master Controller Unit - GC20 Manual Spray Gun - MG20 Powder Pump - PPH40 Conical hopper: 0.21L Desktop Mounting Kit Air Hose & Cable: 5 Meters Hose Connection Accessories Consumable parts kit.</p>

Milepost CG06 Series

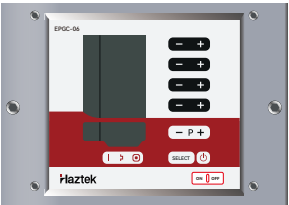




Intelligent and efficient electrostatic powder coating system

Intelligent Systems Integration
Specialized For Large-scale Gun Production
Line Deployments



Milepost CG06 Series

Automatic electrostatic powder spray gun

Products	Description
	<p>CG06 Controller</p> <p>The system comes with over 250 programmable spray programs and 3 daily quick-access programs, allowing for rapid switching between different types of painting workpieces, which increases production efficiency and reduces material consumption. The DVC digital valve technology can precisely control the powder output.</p>
	<p>GCS Spray gun control System</p> <p>Open and intelligent system supporting ERP/MES integration. Enables fast parameter switching, full automation, and stable, repeatable coating quality.</p>
	<p>AG20 Automatic spray gun</p> <p>100kV high-voltage with self-cleaning electrode for strong static charge and high powder efficiency. Covers complex surfaces with minimal waste and excellent atomization.</p>
	<p>PPH40 Powder pump</p> <p>Plug-and-play design for fast color change and easy cleaning. Delivers up to 520g/min with stable, efficient powder transport via quick-connect system.</p>
	<p>Electrical cabinet 14/16/20/30 positions</p> <p>Haztek Dedicated Control Cabinet for Automatic Powder Spray Guns. The controller positions can be configured with 14, 16, 20, or 30 slots.</p>

CG06-A

Automatic Powder Coating Equipment: Master Controller+ Automatic Spray Gun

- Automatic Spray Gun - AG20;
- Master Control Unit - CG06;
- Powder Pump - PPH40;
- Powder Hose: 16 Meters;
- GCS Spray gun control System
- Hose Connection Accessories + Consumable parts kit.



CoatPilot – Smart & Efficient

Simplifies complex processes with ease

80% Powder Transfer Efficiency

Excellent atomization and more uniform powder charging for finer coating

Highly scalable

Compatible with ERP, MES, and other third-party systems via API integration

Strong yet Gentle Atomization

Smoother, more even coating finish with improved leveling

Reliable and durable performance

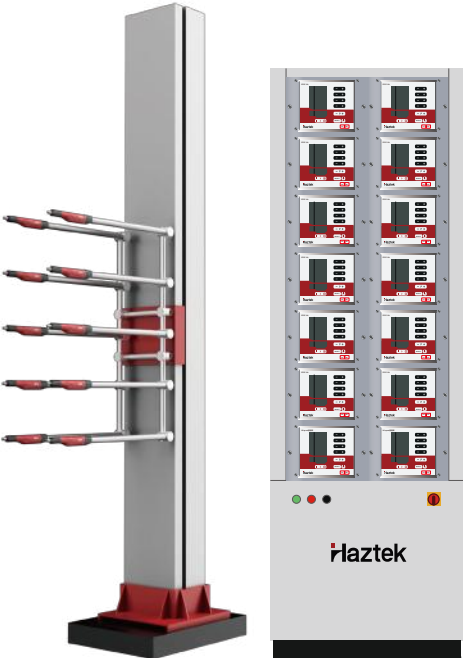
Wear parts have a longer service life (measured in months), with lower maintenance frequency

Triple Air Injection Technology

Continuously cleans the electrode needle to prevent powder buildup

Automatic Powder Coating Equipment: Master Controller+ Automatic Spray Gun

- Automatic Spray Gun - AG20;
- Master Control Unit - CG06;
- Powder Pump - PPH40;
- Powder Hose: 16 Meters;
- Hose Connection Accessories + Consumable parts kit.



Milepost Series

Manual electrostatic powder spray gun

Manual Spray Gun – MG20

Meets the "plug and play" function, suitable for quick color changes and cleaning. Quick plug design for powder hoses to facilitate separation and connection for cleaning. The Venturi tube is made of high-quality non-stick material and comes with a quick connection for compressed air. The maximum powder output is 520g/min.



Products	Description
	<p>CG06-F Manual Powder Coating Equipment</p> <p>Master Control Unit – CG06; Manual Spray Gun – MG20; Mobile Trolley; Stainless Steel Powder Hopper: 50L; Powder Pump – PPH40 Powder Hose: 12*18mm, 6 Meters; Regulator and Air Distribution Unit 3.Standard Hose Connection Accessories + Consumable parts kit.</p>
	<p>CG06-FZ Manual Powder Coating Equipment with Vibration Table</p> <p>Master Control Unit – CG06; Manual Spray Gun – MG20; Mobile Trolley; Vibration Table with Motor; Powder Pump – PPH40 Powder Hose: 12*18mm, 6 Meters; Standard Hose Connection Accessories + Consumable parts kit.</p>

Products	Description
	<p>CG06-SE Wall-Mounted Manual Powder Coating Equipment</p> <p>Master Controller Unit – CG06; Manual Spray Gun – MG20; Powder Pump; Hose & Cable: 6 Meters; Wall-mounted bracket; Consumable parts kit.</p>
	<p>CG06-T Desktop Lab Powder Coating Equipment</p> <p>Master Controller Unit – CG06 Manual Spray Gun – MG20 Powder Pump – PPH40 Powder Hopper: 1.34L Desktop Mounting Kit Air Hose & Cable:5 Meters Hose Connection Accessories Consumable parts kit.</p>
	<p>CG06-TU Desktop Type Lab Powder Coating Equipment with Small Cup</p> <p>Master Controller Unit – CG06 Manual Spray Gun – MG20 Powder Pump – PPH40 Small Powder Cup: 0.3L Air Hose & Cable: 5 Meters Desktop Mounting Kit Hose Connection Accessories + Consumable parts kit.</p>
	<p>CG06-TD Desktop Type Lab Powder Coating Equipment with Small Cup</p> <p>Master Controller Unit – CG06 Manual Spray Gun – MG20 Powder Pump – PPH40 Conical hopper: 0.21L Air Hose & Cable: 5 Meters Desktop Mounting Kit Hose Connection Accessories + Consumable parts kit.</p>

GC901S-A

Automatic Powder Coating Equipment:
Master Controller + Automatic Spray Gun



GC901S-A

Automatic Powder Coating Equipment: Master
Controller+ Automatic Spray Gun

- Automatic Spray Gun - AG09;
- Master Control Unit - GC901;
- Powder Pump - PPH40;
- Powder Hose: 16 Meters
- Hose Connection Accessories+ Consumable parts kit.



GC901S-F

Manual Powder Coating Equipment

- Master Control Unit - GC901;
- Manual Spray Gun - MG10;
- Mobile Trolley;
- Stainless Steel Powder Hopper: 50L;
- Powder Pump - PPH40
- Powder Hose: 12*18mm, 6 Meters;
- Regulator and Air Distribution Unit
- Standard Hose Connection Accessories + Consumable parts kit.



GC901-T

Manual Powder Coating Equipment

- Master Controller Unit - GC901
- Manual Spray Gun - GM02
- Powder Pump - PPH40
- Conical hopper: 0.8L
- Hose Connection Accessories + Consumable parts kit.



CG3000-F

Manual Powder Coating Equipment

- Master Control Unit - HZ-3000;
- Manual Spray Gun - MG10;
- Mobile Trolley;
- Stainless Steel Powder Hopper: 45.5L;
- Powder Pump;
- Powder Hose: 12*18mm, 6 Meters;
- Regulator and Air Distribution Unit
- Standard Hose Connection Accessories + Consumable parts kit.



Equipment parameters

CG3000-F Equipment parameters

Standard input voltage	100-220VAC	Other functions	
Frequency	50-60 Hz	Canbus fieldbus	no
Standard output voltage (to spray gun) 12V		External control (workpiecerecognition system)	no
Standard output current (to spray gun) 1.2 A		Powder coating capability	
Spray gun output voltage	100kV	Metal powder capability	yes
Spray gun output current	100uA	Other polyester powder capability	yes
Polarity	cathode	Standard configuration	
Protection level	IP54	Powder hose length (m)	6
Temperature range	-40°C-85°C	Powder hose specification Ø (mm)	12*18
Compressed air		Powder hose material type	POE with Conductive Strip
Input pressure	5.5-6bar	Maximum powder discharge rate	520g/min
Maximum air consumption	8.5Nm³/h		

Surpass Series equipment parameters

Standard input voltage	100-240VAC	Other functions	
Frequency	50-60 Hz	Canbus fieldbus	Support
Standard output voltage (to spray gun) 12V		External control (workpiecerecognition system)	Support
Standard output current (to spray gun) 1.2 A		Powder coating capability	
Spray gun output voltage	100kV	Metal powder capability	yes
Spray gun output current	100uA	Other polyester powder capability	yes
Polarity	cathode	Standard configuration	
Protection level	IP54	Powder hose length (m)	16/20(Standard Powder Hose Options for Automatic Spray Guns)
Temperature range	-40°C-85°C	Powder hose specification Ø (mm)	12*18/11*17
Compressed air		Powder hose material type	POE with Conductive Strip
Input pressure	5.5-6bar	Maximum powder discharge rate	520g/min
Maximum air consumption	8.5Nm³/h		

Milepost CG06 Equipment Parameters

Standard input voltage	100-240VAC	Other functions	
Frequency	50-60 Hz	Canbus fieldbus	support
Standard output voltage (to spray gun) 12V		External control (workpiecerecognition system)	support
Standard output current (to spray gun) 1.2 A		Powder coating capability	
Spray gun output voltage	100kV	Metal powder capability	yes
Spray gun output current	100uA	Other polyester powder capability	yes
Polarity	cathode	Standard configuration	
Protection level	IP54	Powder hose length (m)	4
Temperature range	-40°C-85°C	Powder hose specification Ø (mm)	11*17
Compressed air		Powder hose material type	POE with Conductive Strip
Input pressure	5.5-6bar	Maximum powder discharge rate	520g/min
Maximum air consumption	8.5Nm³/h		

GC901S Series Equipment parameters

Standard input voltage	100-220VAC	Other functions	
Frequency	50-60 Hz	Canbus fieldbus	no
Standard output voltage (to spray gun) 12V		External control (workpiecerecognition system)	Support
Standard output current (to spray gun) 1.2 A		Powder coating capability	
Spray gun output voltage	100kV	Metal powder capability	yes
Spray gun output current	100uA	Other polyester powder capability	yes
Polarity	cathode	Standard configuration	
Protection level	IP54	Powder hose length (m)	6
Temperature range	-40°C-85°C	Powder hose specification Ø (mm)	12*18
Compressed air		Powder hose material type	POE with Conductive Strip
Input pressure	5.5-6bar	Maximum powder discharge rate	520g/min
Maximum air consumption	8.5Nm³/h		

Great Typhoon Sandwich Quick Color Change System Solution

This is a set of sandwiches big cyclone fast color change powder spraying system, mainly adapted to the user's small batch, multi-color workpiece spraying needs.

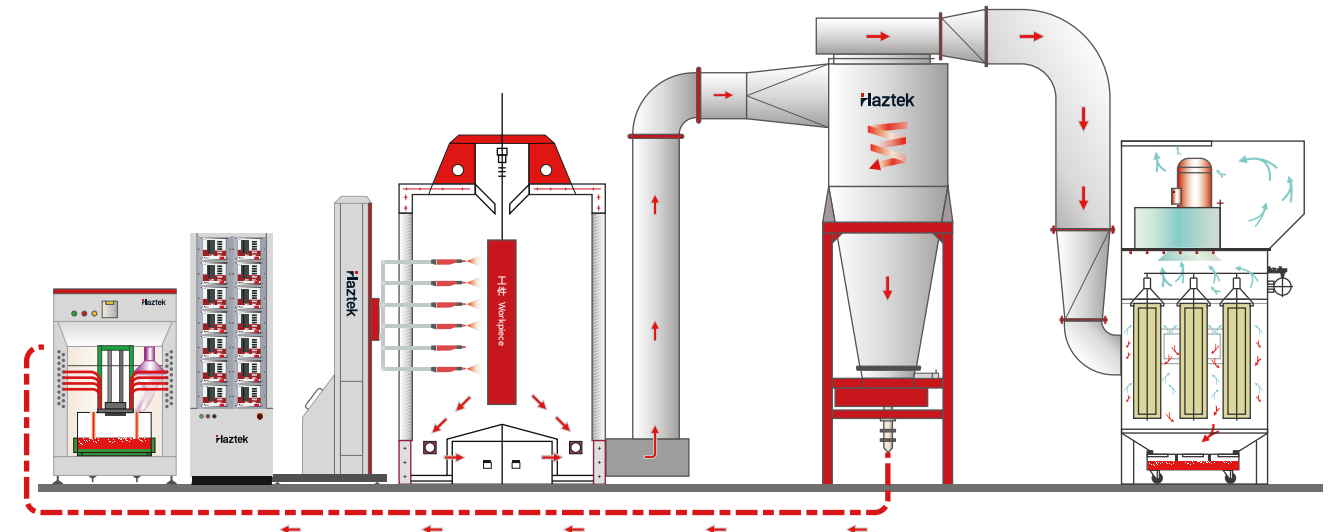
Because of the complexity of the workpiece being sprayed, in order to facilitate hand spraying, it adopts the world's advanced imported platform in front of the hand spraying form. It is easy for hand spraying personnel to observe and spray the difficult spraying corners of the workpiece at zero distance, and the environment of the hand spraying operation position is also more comfortable. After the spray booth hand spray nozzle is externalized, the length of spray booth is shortened, which is easier to clean.



Quick Color Change System Instructions:

- The Quick Color Change System is a new type of economic quick color change system, which takes about 15–25 minutes to clean the spray room and complete the color change.
- The spray room system consists of the following parts:
 - Sandwich structure engineering plastic spray chamber: The spray chamber is made of 100mm sandwich PP engineering plastic board structure,
 - Two-stage recovery system with self-cleaning function and high separation efficiency, including a large cyclone and a secondary filter,
 - Powder supply center of the cleaning system: connected to the large cyclone pipeline to complete negative pressure, saving powder;

- Unique bottom automatic flip plate structure: ensures uniform negative pressure and clean bottom structure
- Slope and automatic flip plate cone top at the bottom of the spray chamber with automatic cleaning air knife, no residue powder;
- Large cyclone hopper with integrated powder pump, easy and quick cleaning;
- Touch screen digital control system



MQC Great Typhoon Magic Quick Change Color Spray Room System

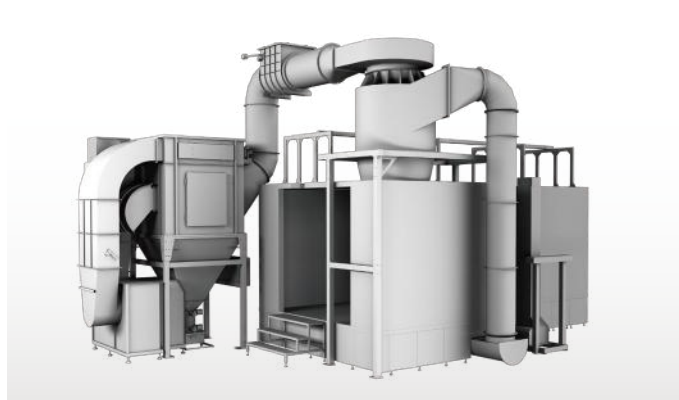
- 1. The spray booth body and floor plate are made of anti-static imported engineering plastics, ensuring high powder coating efficiency, minimal powder retention, and the fastest cleaning speed of the spray booth.
- 2. The large cyclone separation technology achieves a separation rate of up to 98%, saving powder.
- 3. The spray booth floor is equipped with an automatic flip plate device or an automatic cleaning air knife, resulting in virtually no powder retention at the bottom of the spray booth.
- 4. The powder supply center can achieve fully automatic powder recirculation. During spray booth cleaning, the powder supply center will automatically clean the powder suction pipe, powder pump, powder tube, and spray gun.
- 5. An automatic new powder addition device can be configured.



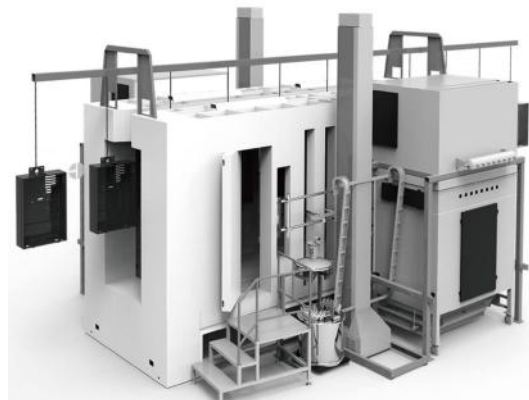
- 6. The powder supply center features a powder-saving design, minimizing the waste of powder during fluidization and spraying.
- 7. An automatic spray gun body cleaning device can be configured.
- 8. High-quality, long-lasting nanofilm filter cartridges are used, with a lifespan that can last for several years. The nanofilm filter cartridges can capture dust particles larger than 0.1 micrometers, ensuring no powder is wasted. Meanwhile, the filtered air becomes clean and can be directly recirculated within the factory building.
- 9. A variety of bottom recycling methods are available to suit different types of workpieces.

Production demand customized service

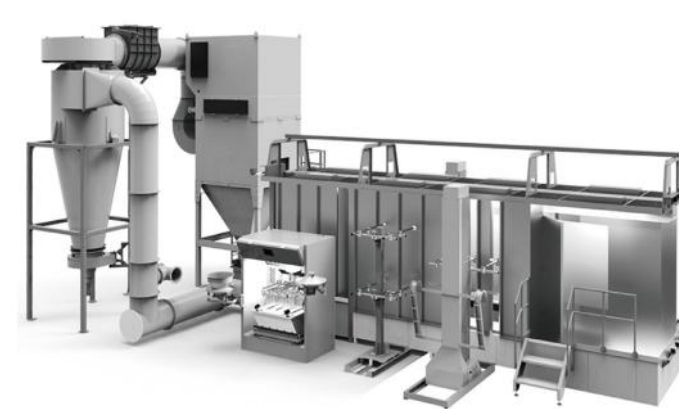
Powder Coating Booth Customization Services: Customizing the configuration of powder coating booths based on the coating products, chain speed requirements, and color change requirements. Providing technical solutions that cover automatic spray booths, manual spray booths, and vertical coating lines for aluminum profiles.



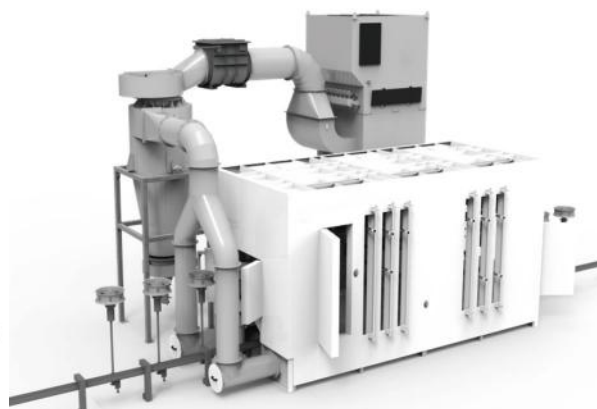
JCPF-00 Integrated Spray Booth



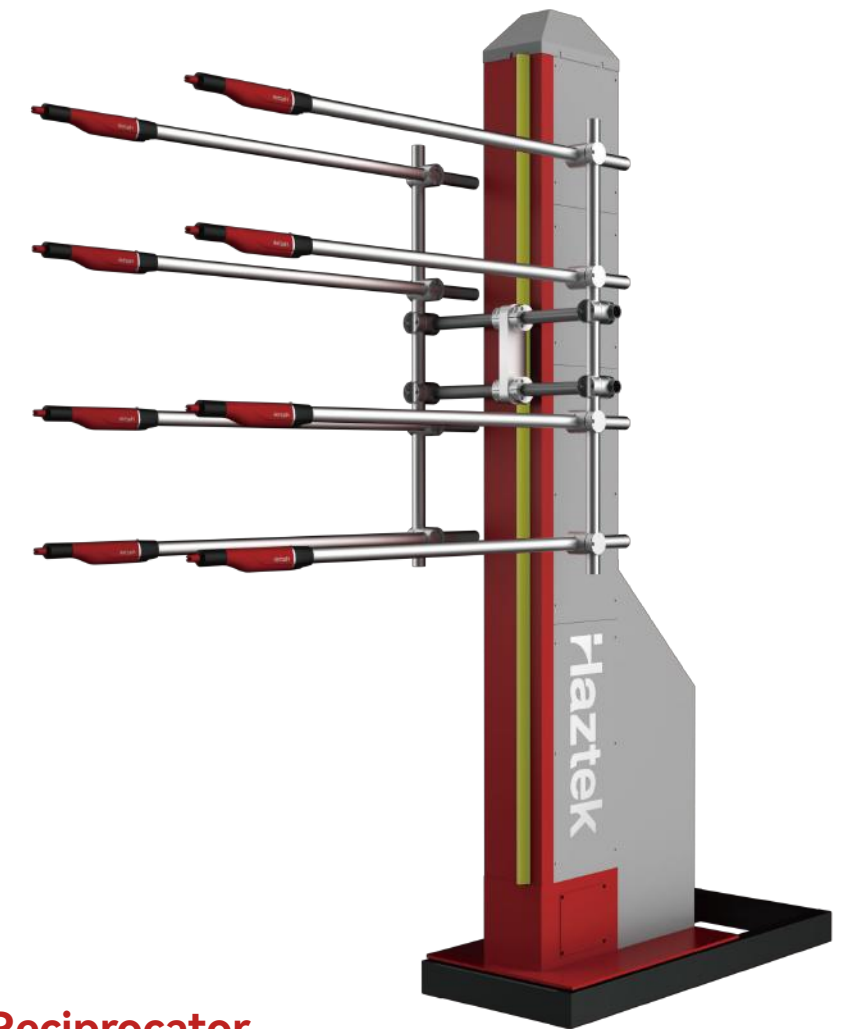
SBB Single-Stage Filter Cartridge Back-to-Back Recycling Spray Booth System



MDF Medium Density Fiberboard Spray Booth System



VWH Hub Floor-Track Spray Booth System



Servo-Driven Reciprocator

- The power components adopt top-brand, high-torque planetary gear reducers, paired with high-precision servo motors, allowing the entire machine to operate with excellent stability even at extremely high speeds or during rapid reciprocation.
- The speed control components use servo controllers equipped with microprocessor control and IGBT technology, offering both reliability and flexibility. Comprehensive protection features safeguard both the controller and the motor.
- The control system utilizes a new-generation digital intelligent operation controller. With a fully digital powder coating control interface, users can easily and accurately set coating parameters via touch keys. The controller supports coating program selection, fault diagnostics, data setting limits, remote RS485 communication control, and can store up to 250 coating programs.
- The mechanical system features four dual-row U-groove ball-bearing rollers that tightly grip aluminum-profile bearing steel guide rails. Movement is driven by a steel-wire timing belt, resulting in smooth, vibration-free operation with low noise and minimal wear.
- The spray gun rod and gun holder are made of aluminum alloy, offering lightweight design, stable performance, and an attractive appearance.
- The reciprocator has an adjustable operating speed range of 0.08 m/s to 0.8 m/s, with available stroke lengths of 1.5 m, 2.0 m, 2.5 m, 3.0 m, and 3.5 m. Custom strokes can be made upon special request.

Powder Booth

Model: HZ-P1020

- External dimensions: 1000(W)*1300(D)*2000(H)mm
- Fan powder: 1.5kw
- Filter cartridge :325-600
- Number of filter cartridges: 2 pcs
- Input air pressure: 0.45-0.6Mpa
- Fan position: Top

Model: HZ-P2020

- External dimensions: 2000(W)*1500(D)*2000(H)mm
- Fan powder: 3kw
- Filter cartridge :325-900
- Number of filter cartridges: 3 pcs
- Input air pressure: 0.45-0.6Mpa
- Fan position: Bottom

Model: HZ-P3020

- External dimensions: 3000(W)*1800(D)*2000(H)mm
- Fan powder: 5.5kw
- Filter cartridge :325-900
- Number of filter cartridges: 5 pcs
- Input air pressure: 0.45-0.6Mpa
- Fan position: Bottom

Model: HZ-P1520

- External dimensions: 1500(W)*1500(D)*2000(H)mm
- Fan powder: 2.2kw
- Filter cartridge :325-600
- Number of filter cartridges: 3 pcs
- Input air pressure: 0.45-0.6Mpa
- Fan position: Top

Model: HZ-P2520

- External dimensions: 2500(W)*1800(D)*2000(H)mm
- Fan powder: 5.5kw
- Filter cartridge :325-900
- Number of filter cartridges: 4 pcs
- Input air pressure: 0.45-0.6Mpa
- Fan position: Bottom

Model: HZ-P3520

- External dimensions: 3500(W)*1800(D)*2000(H)mm
- Fan powder: 5.5kw
- Filter cartridge :325-900
- Number of filter cartridges: 6 pcs
- Input air pressure: 0.45-0.6Mpa
- Fan position: Bottom



Curing Oven

Model: HZ-1000

- Inner Tank Dimensions (MM): H1000*W800*L600
- Outer Tank Dimensions (MM): H1810*W1160*L800
- Inner Tank Volume (L): 480
- Inner Tank Material: Stainless steel plate/Galvanized sheet
- Temperature control range: Room temperature +5-300°C
- Quantity of pallets: Two perforated discs
- Blower system: Wind movement from left to right
- Power supply: 380V*9KW

Model: HZ-1600

- Inner Tank Dimensions (MM): H1600*W1200*L850
- Outer Tank Dimensions (MM): H1940*W1860*L1050
- Inner Tank Volume (L): 1632
- Inner Tank Material: Stainless steel plate/Galvanized sheet
- Temperature control range: Room temperature +5-250°C
- Quantity of pallets: NO
- Blower system: Wind movement from left to right
- Power supply: 380V*18KW

Model: HZ-750

- Inner Tank Dimensions (MM): H750*W600*L600
- Outer Tank Dimensions (MM): H1500*W1360*L900
- Inner Tank Volume (L): 270
- Inner Tank Material: Stainless steel plate/Galvanized sheet
- Temperature control range: Room temperature +5-300°C
- Quantity of pallets: NO
- Blower system: Wind movement from left to right
- Power supply: 380V*24KW



Model: HZ-1200

- Inner Tank Dimensions (MM): H1200*W1200*L800
- Outer Tank Dimensions (MM): H1740*W1860*L1000
- Inner Tank Volume (L): 1152
- Inner Tank Material: Stainless steel plate/Galvanized sheet
- Temperature control range: Room temperature +5-250°C
- Quantity of pallets: NO
- Blower system: Wind movement from left to right
- Power supply: 380V*15KW

Model: HZ-1800

- Inner Tank Dimensions (MM): H1800*W1500*L1000
- Outer Tank Dimensions (MM): H2300*W2160*L1200
- Inner Tank Volume (L): 2700
- Inner Tank Material: Stainless steel plate/Galvanized sheet
- Temperature control range: Room temperature +5-300°C
- Quantity of pallets: NO
- Blower system: Wind movement from left to right
- Power supply: 380V*18KW



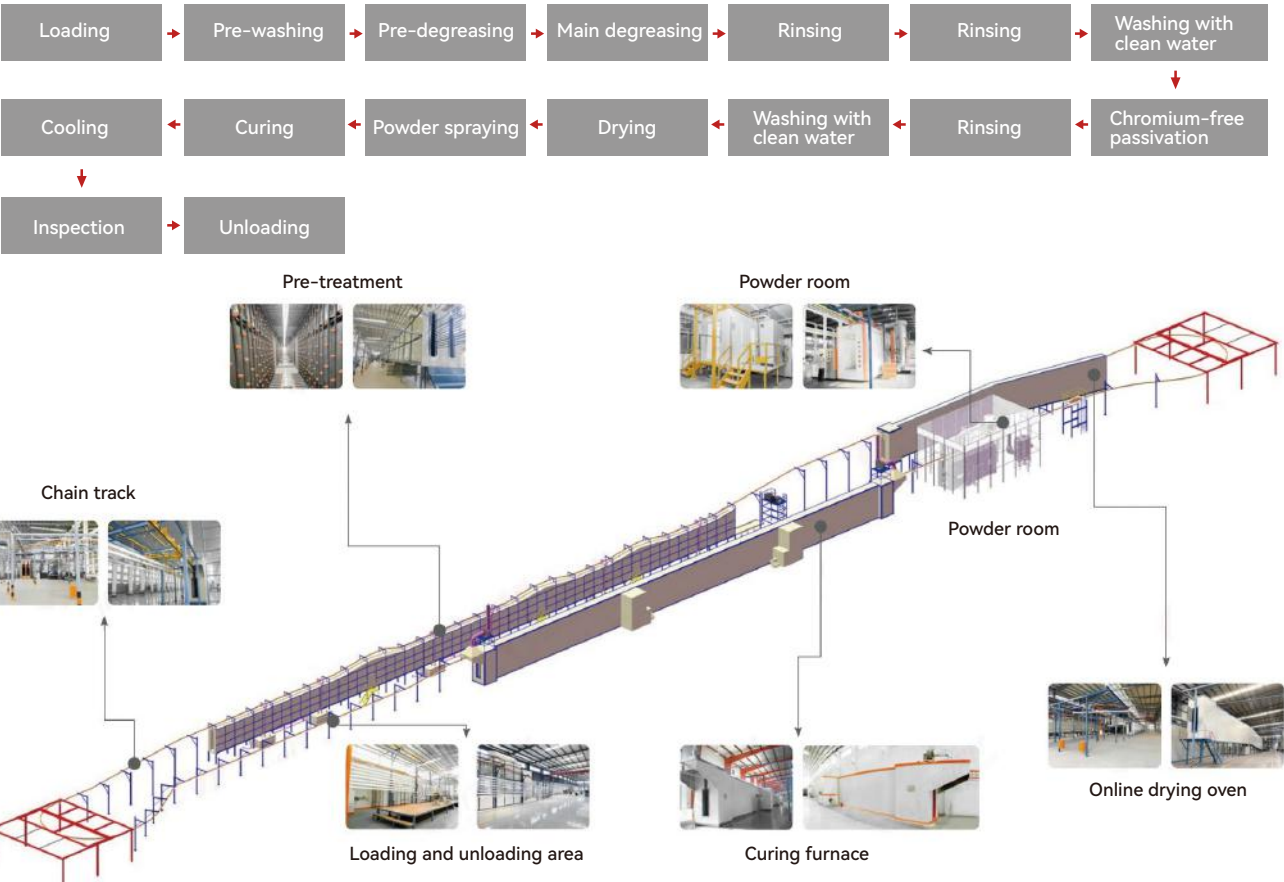
Basic Manual Powder Coating Equipment: manual powder spray gun, spray booth, and oven.

Advantages of electrostatic powder spraying

- Low Pollution: One major advantage is minimal pollution. During the electrostatic powder coating process, no organic solvents evaporate, and it does not contain harmful gases such as toluene or xylene typically found in liquid paints.
- Energy Saving: Since electrostatic powder coating forms a film in one go, it can reduce energy consumption by approximately 30%.
- Strong Corrosion Resistance: Powder coatings consist of fine particles and result in a dense coating. This dense layer provides excellent resistance to corrosion.
- High Gloss Finish: The coating formed by powder spraying offers a high-gloss finish, capable of achieving a mirror-like surface.
- Wide Range of Colors: A broad selection of colors is available and can be customized according to client requirements, with minimal color variation.



Horizontal Powder Coating Line

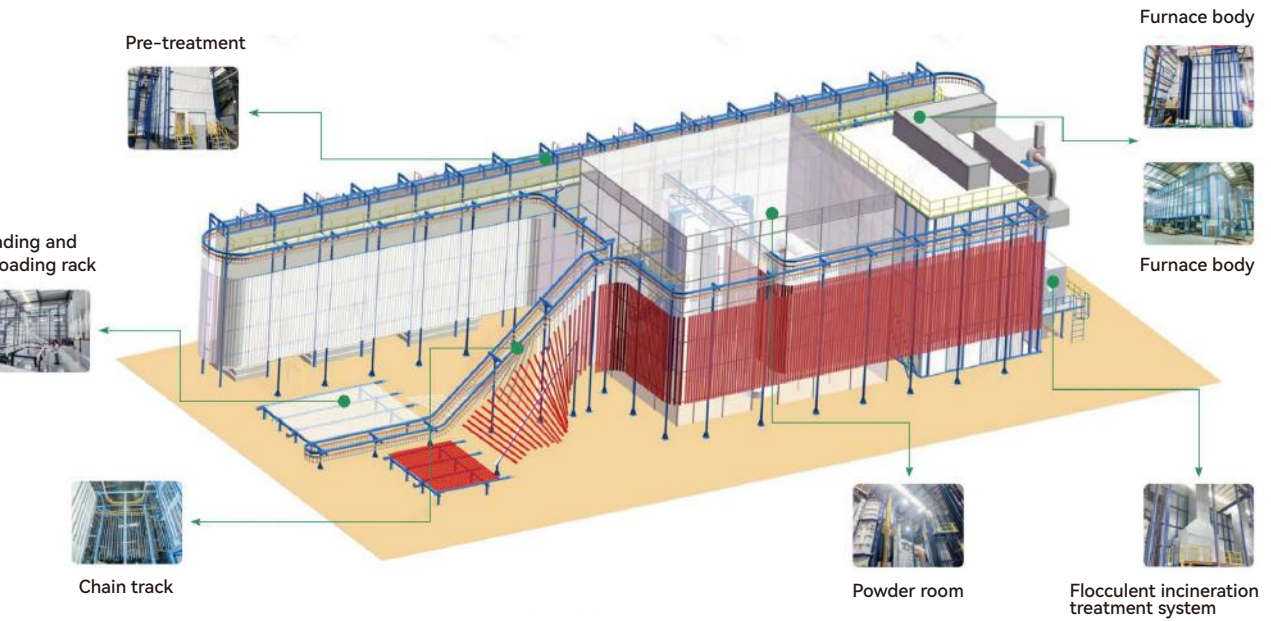


Advantages of electrostatic powder spraying

- Low Pollution: One major advantage is minimal pollution. During the electrostatic powder coating process, no organic solvents evaporate, and it does not contain harmful gases such as toluene or xylene typically found in liquid paints.
- Energy Saving: Since electrostatic powder coating forms a film in one go, it can reduce energy consumption by approximately 30%.
- Strong Corrosion Resistance: Powder coatings consist of fine particles and result in a dense coating. This dense layer provides excellent resistance to corrosion.
- High Gloss Finish: The coating formed by powder spraying offers a high-gloss finish, capable of achieving a mirror-like surface.
- Wide Range of Colors: A broad selection of colors is available and can be customized according to client requirements, with minimal color variation.

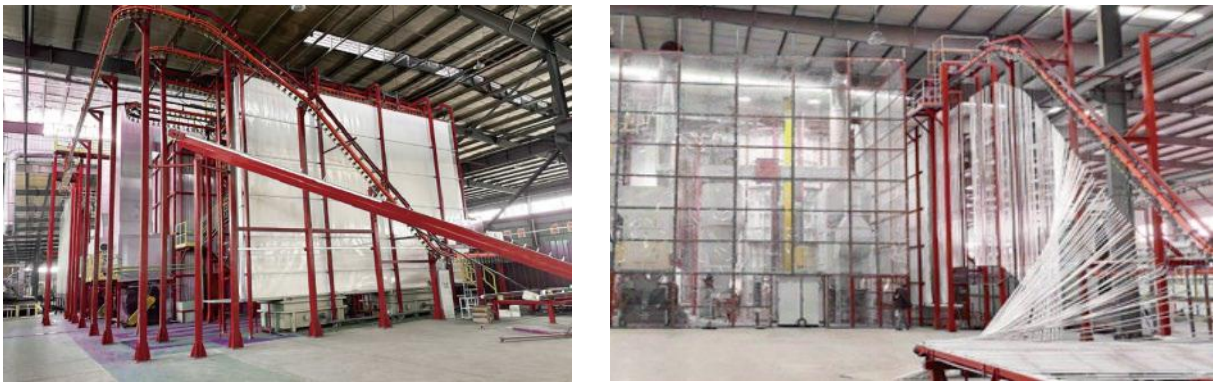


Vertical Powder Coating Line

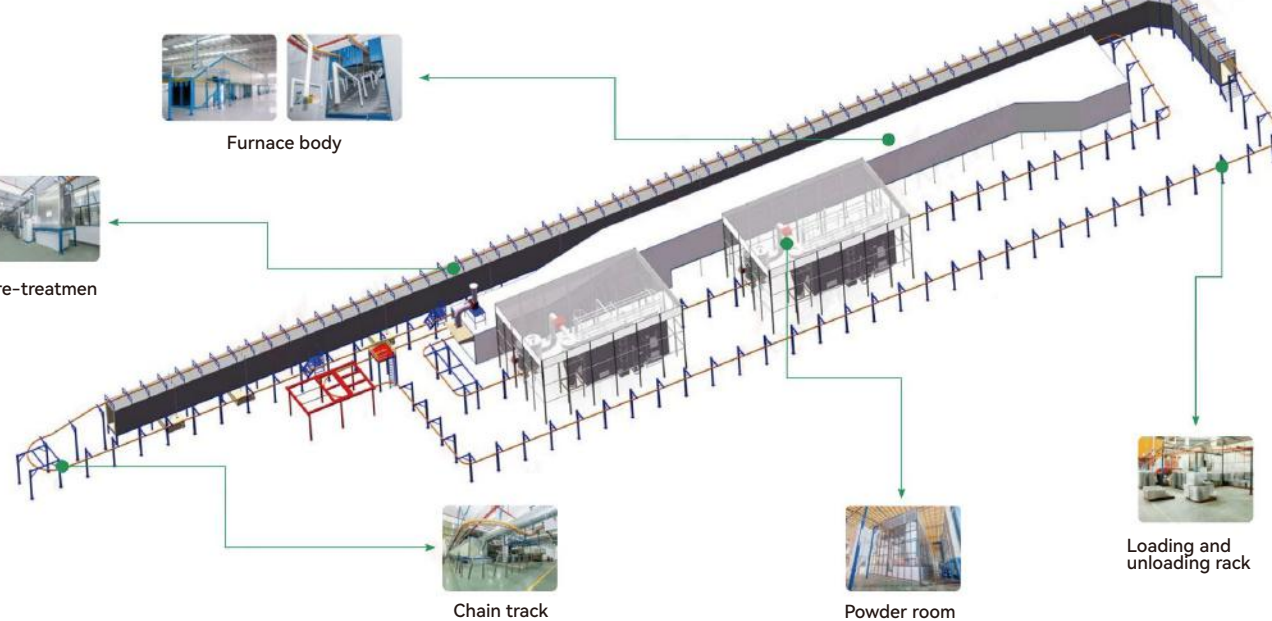


Advantages and features of the Bridge-Type Furnace

- Fully automated control — from hanging raw workpieces to finished coated products, the entire process is completed in one go.
- Low energy consumption — the curing oven adopts a semi-enclosed design with high heat utilization efficiency, saving over 15% in energy.
- Labor saving — automation reduces manual labor intensity and saves up to 20 workers.
- Low powder consumption — high one-pass powdering rate and uniform film thickness on workpieces help save up to 20% powder.
- Small footprint — a production line with a monthly capacity of 2,000 tons occupies a workshop area of W20m × L53m.
- High production capacity — output can be customized from 1,000 tons/month to 3,000 tons/month according to user requirements.



Hardware products powder coating line

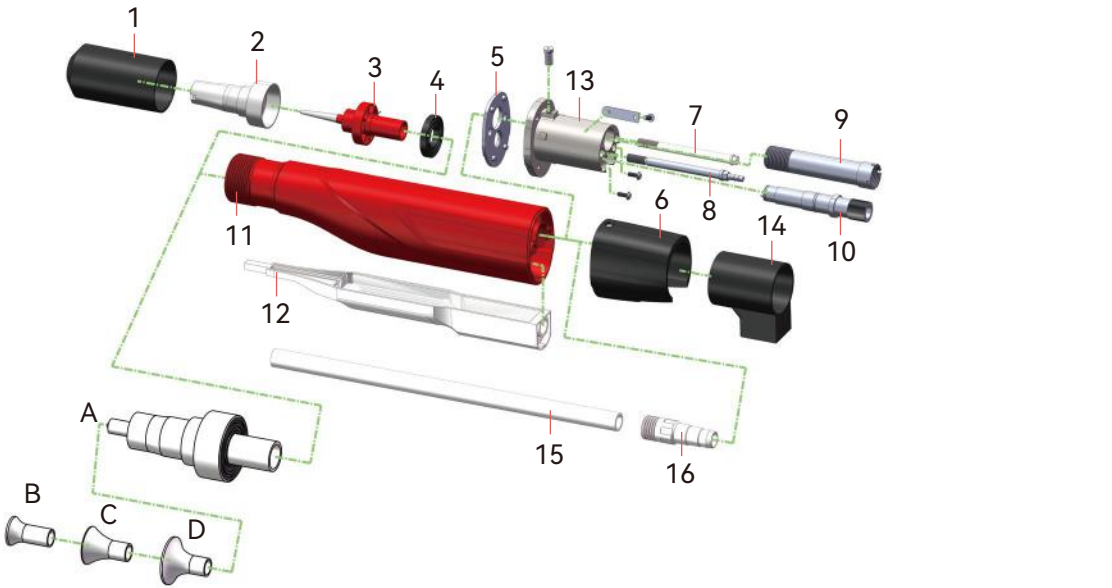


Advantages and features of the vertical line

- Hardware Bridge-Type Furnace: Features inclined inlet and outlet sections with an elevated furnace body design, raising the bottom surface of the furnace to improve clearance and facilitate material flow.
- 1. Efficient Thermal Insulation: The bridge-type drying tunnel features excellent insulation performance, minimizing heat loss and reducing energy consumption by 30%–40%.
- 2. Space-Saving Design: The overhead furnace structure maximizes space utilization and significantly reduces floor space requirements.
- 3. Versatile Application: Compatible with a wide variety of parts, including irregularly shaped components.
- 4. Enhanced Temperature Uniformity: Delivers consistent temperature distribution, improving curing quality and increasing production yield.



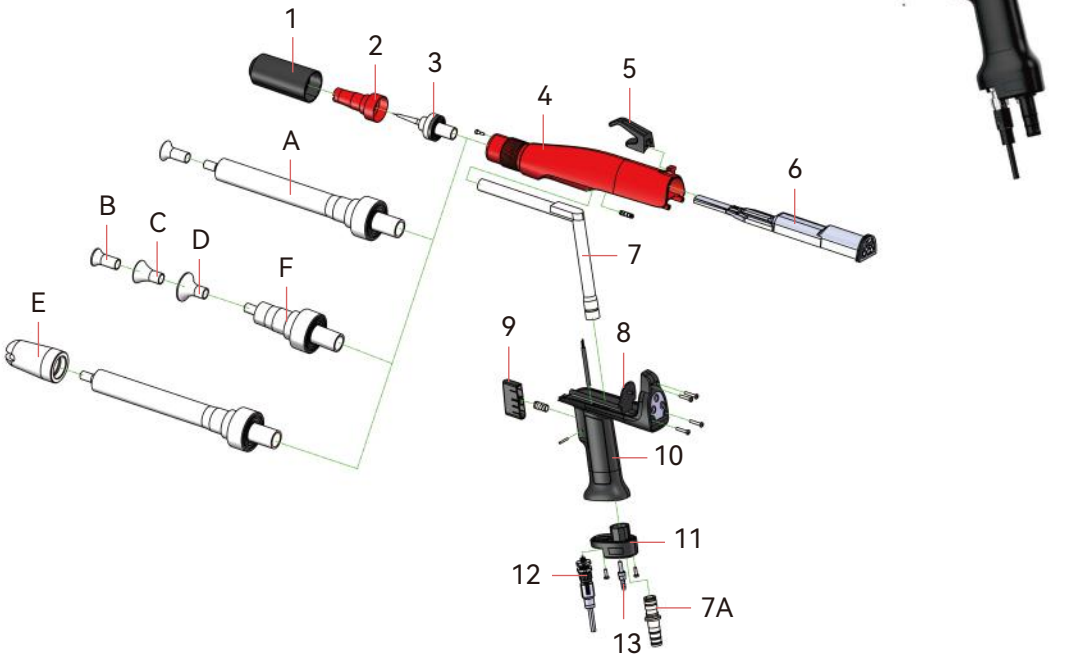
AG20 Automatic Powder Spray Gun Assembly Diagram



Material code and part name

Encoding	Material Code	Component
1	10603004	Electrode Needle Fastening Sleeve JGT-AG20
2	12101015	Fan-shaped Nozzle SPZ-AG20R/ET18 (Horizontal)
3	12102009	Fan-shaped Electrode Needle Assembly SDJ-GA20R/ET
4	10610004	Conductive Ring DDH-AG20/GR
5	10604001	Gun Housing Sealing Gasket MFD-AG20
6	10602003	Automatic Powder Spray Gun Tail Cap QWG-AG20
7	10301007	Aluminum Column Screw for Fixed Rear Cap
8	11002045	Tube Fitting: AG20 Cleaning
9	10301006	Hollow Stainless Steel Fastening Screw
10	11404009	Contact Contactor: AG20
11	10601007	Automatic Spray Gun Housing Kit SurpGun AG20/T
12	11701005	High-voltage Multiplier Module HV-AG20/0C
13	10804001	Automatic Spray Gun Rear-end Sleeve DT-AG20
14	10804003	Automatic Spray Gun Mounting Base GD-AG20
15	12110011	Inner Powder Tube Kit for Powder Spray Gun NFG-AG20I/TPT
16	10613005	Inner Powder Tube Connector GJT-IET
A	12107007	Round Electrode Needle Kit YDTT-AG20/7.22
B	12104015	Spray Gun Diffuser Plate KSB-722-14PA
C	12104016	Spray Gun Diffuser Plate KSB-722-20PA
D	12104017	Spray Gun Diffuser Plate KSB-722-24PA

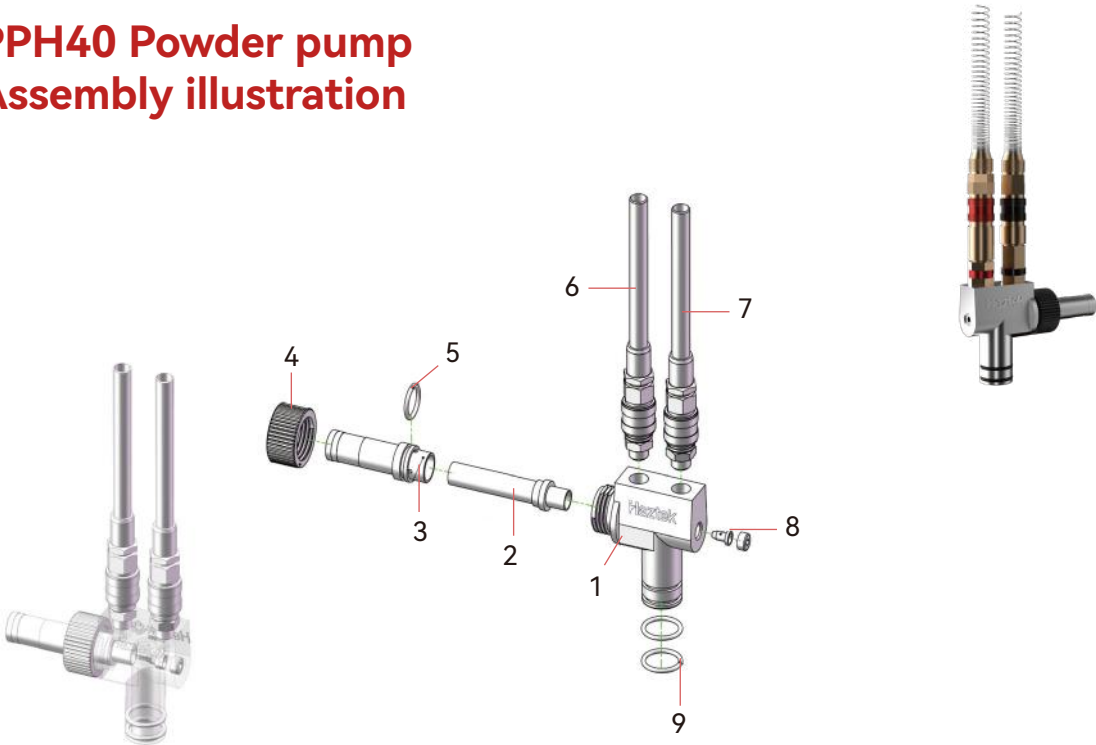
MG20 Manual spray gun assembly illustration



Material code and part name

Encoding	Material Code	Component
1	10603004	Electrode Needle Fastening Sleeve JGT-MG20
2	12101015	Fan-shaped Nozzle SPZ-AG20R/ET18
3	12102009	Fan-shaped Electrode Needle Assembly SDJ-GA20R/ET
4	10610004	Manual Spray Gun Housing Kit SurpGun MG20/T
5	10604001	Spray Gun Mounting Hook PQGG-MG20
6	10602003	High-voltage Multiplier Module HV-MG20/0C
7	10301007	Inner Powder Tube NFG-MG20K/PA
7A	11002045	Inner Powder Tube Connector GJT-MG20
8	10301006	Tail Cap Mainboard QWG-MG20/1
9	11404009	Manual Powder Spray Gun Trigger QBJ-MG20
10	10601007	Manual Powder Spray Gun Handle QSB-MG20
11	11701005	Manual Powder Spray Gun Bottom Cover QDG-MG20
12	10804001	Cable / 8PIN-M12 / 0.3M
13	10804003	Tube Fitting: MG20 Cleaning
A	12110011	Extended Electrode Needle Kit LDJT-MG20/PA722-150
B	10613005	Spray Gun Diffuser Plate KSB-722-14PA
C	12107007	Spray Gun Diffuser Plate KSB-722-20PA
D	12104015	Spray Gun Diffuser Plate KSB-722-24PA
E	12104016	Fan-shaped Nozzle (with Flow Guide Tube) SPZD-GM03/ET24
F	12104017	Round Electrode Needle Kit YDTT-AG20/722

PPH40 Powder pump Assembly illustration



Material code and part name

Encoding	Material Code	Component
1	10803022	Electrode Needle Fastening Sleeve JGT-AG20
2	12111017	Fan-shaped Nozzle SPZ-AG20R/ET18 (Horizontal)
3	10805002	Fan-shaped Electrode Needle Assembly SDJ-GA20R/ET
4	10806007	Conductive Ring DDH-AG20/GR
5	10618004	Gun Housing Sealing Gasket MFD-AG20
6	11003003	Automatic Powder Spray Gun Tail Cap QWG-AG20
7	11003004	Aluminum Column Screw for Rear Cap Fixing
8	10801006	Tube Fitting: AG20 Cleaning
9	10618015	Hollow Stainless Steel Fastening Screw

Case Application | Empowerment

Technical Breakthroughs Quality Certification,
Recognized by the Nation



Aluminum profiles – Project implementation



Aluminum profiles –Project implementation

10000+

More than 10000 units worldwide annually
Rich experience and professional knowledge
in project implementation

Personalized Solutions
Recognized by the industry for outstanding
performance and high reliability

Creating the Best Return on Investment
Rich experience and professional knowl-
edge in project implementation

